

**MONZHA WOMAN PO0410**



**DESCRIPTION**

Technical, breathable, short-sleeved fitted polo shirt. Tone-on-tone 1x1 rib collar. 3-button placket. Tone-on-tone neck tape. UV certified.

**COMPOSITION**

100% polyester piqué, 150 gsm.

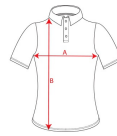
**REMARKS**

Breathable, easy wash and dry fabric. \*Removable label. \*Technical fabric. \*Breathable fabric. \*Duo concept.

**SIZES**

Adults:: S · M · L · XL · 2XL / :

**SCHEME**



**QUANTITIES**

	Box	Pack
<b>Adults:</b>	50 un.	1 un.



**COLORS**

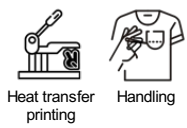


**SIZES**

Adults:	S	M	L	XL	2XL
WIDTH (A)	41cm	44cm	47cm	50cm	53cm
LONG (B)	60cm	62.5cm	64.5cm	66.5cm	68.5cm

\*[Measured from the edge 1 cm below the sleeves / Measured from the highest point of the shoulder to the end of the garment]

**PRINTING TECHNIQUES AVAILABLE**



**CERTIFICATES**

